

NEW DEVELOPMENT GROUND

69 Highway & Atkinson Road (NWQ), Pittsburg, KS



SALE PRICE: \$1,500,000 | 6.98 ACRES

DEMOGRAPHICS

	1 mile	3 miles	5 miles
Estimated Population	3,496	16,933	26,753
Avg. Household Income	\$54,564	\$59,883	\$57,357

- 6.98 acres of development land for sale
- Just north of Home Depot and Walmart Supercenter
- In the heart of Pittsburg's main retail corridor

[CLICK HERE TO VIEW MORE LISTING INFORMATION](#)

For More Information Contact:

DAVID BLOCK | 816.412.7400 | dblock@blockandco.com

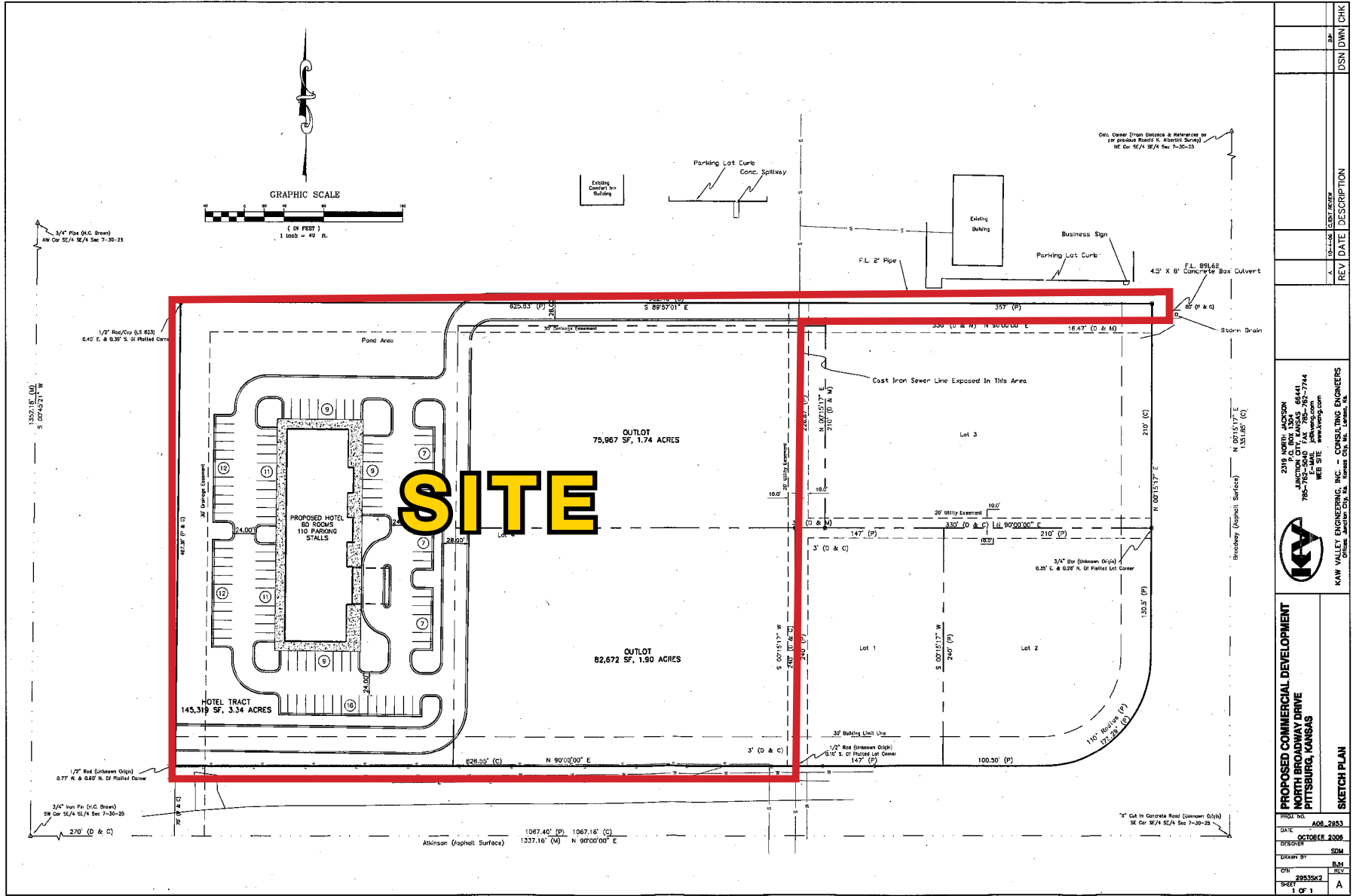
Exclusive Agent



NEW DEVELOPMENT GROUND

69 Highway & Atkinson Road (NWQ), Pittsburg, KS

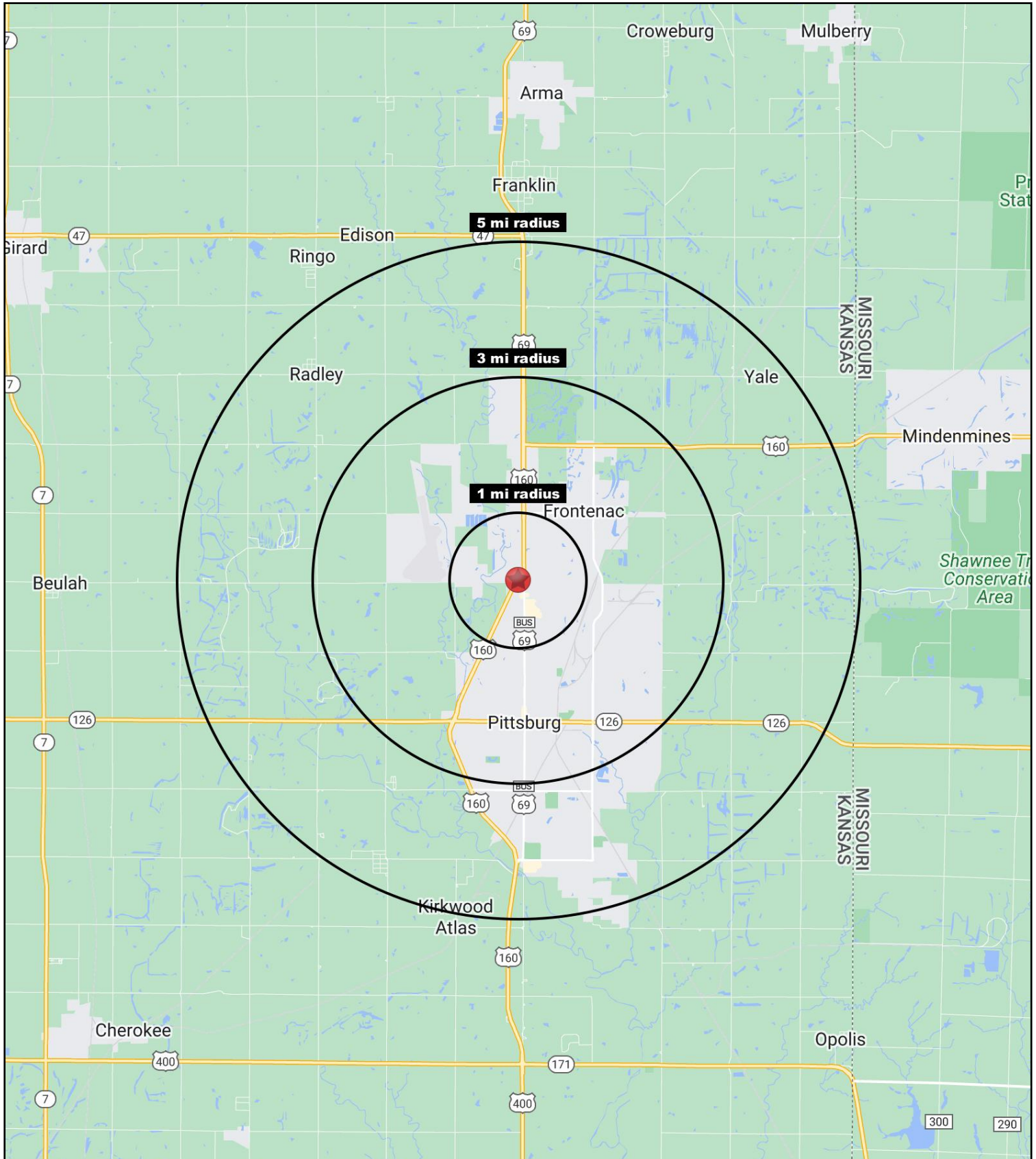
POSSIBLE DEVELOPMENT PLAN





NEW DEVELOPMENT GROUND

69 Highway & Atkinson Road (NWQ), Pittsburg, KS





NEW DEVELOPMENT GROUND

69 Highway & Atkinson Road (NWQ), Pittsburg, KS

69 Highway & Atkinson Road Pittsburg, KS 66762	1 mi radius	3 mi radius	5 mi radius
Population			
2021 Estimated Population	3,496	16,933	26,753
2026 Projected Population	3,502	16,958	27,081
2020 Census Population	3,516	16,991	26,871
2010 Census Population	3,473	17,037	26,524
Projected Annual Growth 2021 to 2026	-	-	0.2%
Historical Annual Growth 2010 to 2021	-	-	-
2021 Median Age	33.6	31.8	30.6
Households			
2021 Estimated Households	1,423	6,924	10,754
2026 Projected Households	1,471	7,150	11,240
2020 Census Households	1,429	6,953	10,799
2010 Census Households	1,424	7,013	10,644
Projected Annual Growth 2021 to 2026	0.7%	0.7%	0.9%
Historical Annual Growth 2010 to 2021	-	-0.1%	-
Race and Ethnicity			
2021 Estimated White	79.9%	80.0%	77.9%
2021 Estimated Black or African American	2.2%	2.8%	2.8%
2021 Estimated Asian or Pacific Islander	1.3%	1.3%	5.6%
2021 Estimated American Indian or Native Alaskan	0.7%	0.9%	0.8%
2021 Estimated Other Races	15.9%	15.0%	12.8%
2021 Estimated Hispanic	10.2%	10.5%	8.4%
Income			
2021 Estimated Average Household Income	\$54,564	\$59,883	\$57,357
2021 Estimated Median Household Income	\$44,588	\$46,783	\$44,810
2021 Estimated Per Capita Income	\$22,431	\$24,594	\$23,365
Education (Age 25+)			
2021 Estimated Elementary (Grade Level 0 to 8)	3.5%	2.9%	2.5%
2021 Estimated Some High School (Grade Level 9 to 11)	4.3%	5.2%	4.5%
2021 Estimated High School Graduate	32.4%	29.8%	27.7%
2021 Estimated Some College	23.0%	25.0%	24.2%
2021 Estimated Associates Degree Only	8.5%	7.5%	8.2%
2021 Estimated Bachelors Degree Only	19.3%	18.8%	20.5%
2021 Estimated Graduate Degree	9.0%	10.7%	12.5%
Business			
2021 Estimated Total Businesses	146	794	1,060
2021 Estimated Total Employees	2,042	9,809	13,132
2021 Estimated Employee Population per Business	14.0	12.3	12.4
2021 Estimated Residential Population per Business	23.9	21.3	25.2

©2022, Sites USA, Chandler, Arizona, 480-491-1112 Demographic Source: Applied Geographic Solutions 11/2021, TIGER Geography - RS1





NEW DEVELOPMENT GROUND

69 Highway & Atkinson Road (NWQ), Pittsburg, KS

PITTSBURG, KANSAS

ABOUT PITTSBURG, KANSAS

Pittsburg is a town in Crawford County in the Ozark region of Southeast Kansas, 27 miles south of Fort Scott, Kansas, 96 miles west of Springfield, Missouri and 137 miles northeast of Tulsa, Oklahoma. It is the most populous city both in Crawford County and in Southeast Kansas. The population was 19,243 at the 2000 census.

Pittsburg was founded on May 20, 1876, named after and in honor of the city of Pittsburgh, Pennsylvania. Franklin Playter is credited with being the city's founder, establishing a government from its earlier incarnation as a coal mining camp in the late 1870s.

Pittsburg is the home to Pittsburg State University and to two high schools, Pittsburg High School (United School District 250) and St. Mary's-Colgan High School.

HERITAGE

The city has a rich cultural heritage from many European mine workers who settled in and around Pittsburg. There is a grocery store operating under an Italian name (Pullucca's) in the nearby town of Frontenac. The city was founded in 1876 and incorporated in 1880. It is situated in the center of productive coal fields.

An annual celebration unique to Pittsburg is Little Balkans Days, which is a celebration of the community's European ethnic heritage featuring games, entertainment, a parade, competitions and arts and crafts. Little Balkans Days is held in conjunction with the Labor Day holiday.

The city is the birthplace and childhood home of broadcast journalism pioneer Paul White, legendary news director for CBS in the 1930s and 1940s.

DEMOGRAPHICS

As of the census of 2010, there were 20,233 people, 8,142 households, and 4,087 families residing in the city. The population density was 1,580.7 inhabitants per square mile (610.3/km²). There were 9,210 housing units at an average density of 719.5 per square mile (277.8/km²). The racial makeup of the city was 87.1% White, 3.3% African American, 0.9% Native American, 2.0% Asian, 0.3% Pacific Islander, 3.0% from other races, and 3.4% from two or more races. Hispanic or Latino of any race were 6.7% of the population.

WHY PITTSBURG?

The City of Pittsburg maintains an excellent industrial business climate through an aggressive economic program. Pittsburg was founded around coal mining and manufacturing, and these beginnings have grown into a highly diversified industrial base. Pittsburg is the home of Superior Industries International, Inc.; Watco Companies, Inc.; Names & Numbers; Miller's Professional Imaging; National Mills; Pitsco; National Pizza Company and many others.

The Business and Technology Institute of Pittsburg State University is an umbrella organization providing managerial, financial and technical assistance to all businesses and industries. Pittsburg State University, the Kansas Technology Enterprise Corporation and the City of Pittsburg recently formed the Alliance for Technology Commercialization to work with high-tech entrepreneurs starting a business. This alliance will also have seed capital available to invest in these new companies.

With more than 3,500 industrial workers, the area's 41 manufacturing companies make durable and soft goods such as plastic bags and wrappers, aluminum automobile wheels, business forms, sportswear, machine shop products, screen printing equipment, animal and pet foods, as well as plastic and clay pipe, custom photography enhancement and food products, to name just a few.